

# 3rd Floor

## Sunday Class Safety Plan



Attendance for each class must be taken before class begins.  
Write names of any visitors on the form for that week.



### ***In Case of Fire***

- \*Determine location of the fire.
- \*Use the stairway ***furthest*** away from the fire.
- \****Stairway A:*** Exit building through lobby line students up in front of **40 E. 80** wait for further instructions.
- \****Stairway B:*** Exit building through basement fire exit in stairway B. Travel through **40 E. 80** basement and exit the building and line students up in front of **40 E. 80** wait for further instructions.

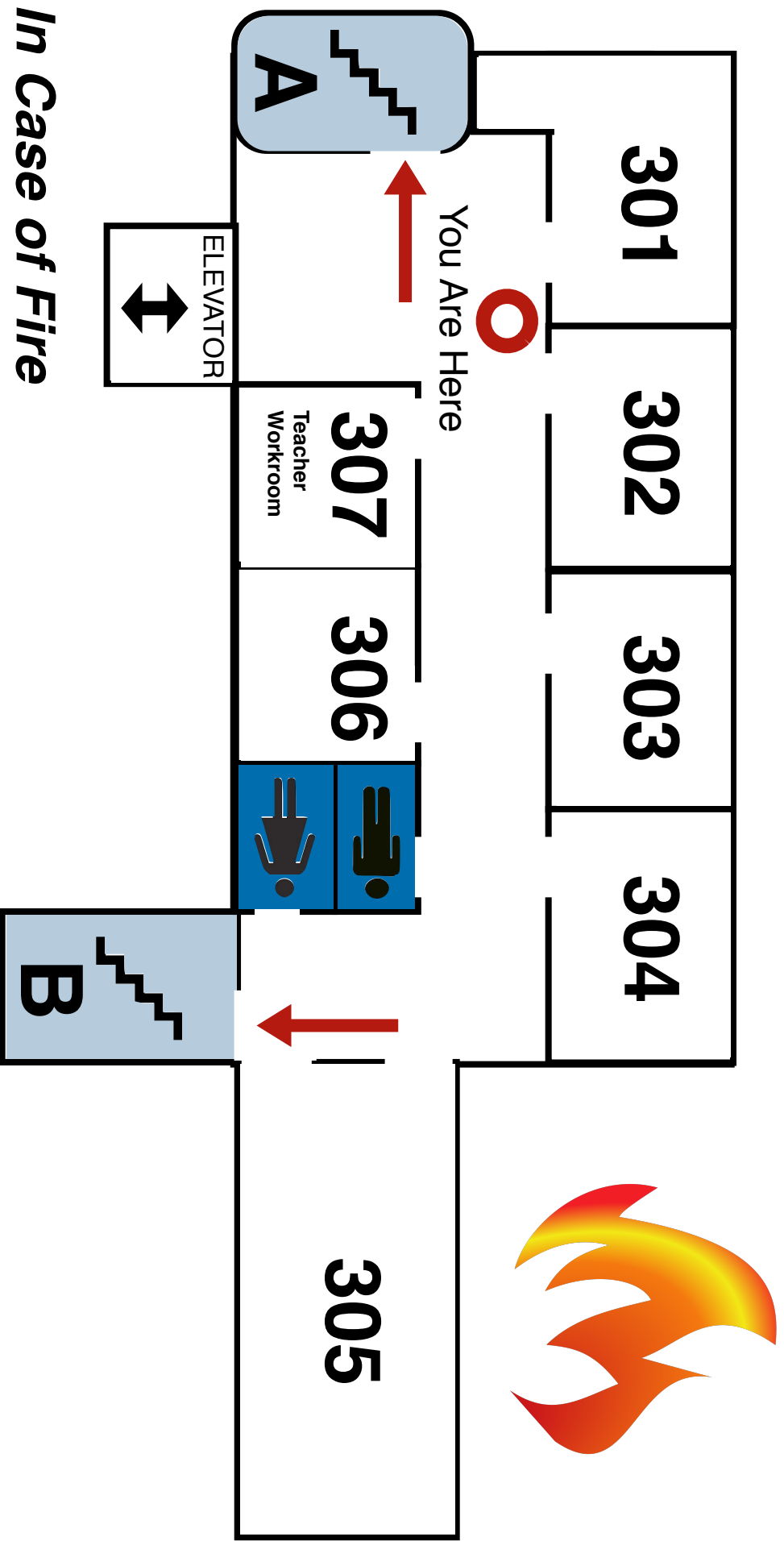


### ***In Case of Police Emergency***

- \*Close and lock all classroom doors.
- \*Barricade doors with chairs and furniture.
- \*Move away from doors.
- \****Shelter in place until you receive the ALL CLEAR signal.***



# 3rd Floor Fire Safety Plan



## *In Case of Fire*

- \* Determine location of the fire.
- \* Use the stairway **furthest** away from the fire.
- \* **Stairway A:** Exit building through lobby, line students up in front of 40 E. 80
- \* **Stairway B:** Exit building through basement fire exit into 40 E. 80 and line students up in front of 40 E. 80

# 4th Floor Sunday Class Safety Plan



Attendance for each class must be taken before class begins.  
Write names of any visitors on the form for that week.



## ***In Case of Fire***

- \*Determine location of the fire.
- \*Use the stairway ***furthest*** away from the fire.
- \****Stairway A:*** Exit building through lobby line students up in front of **40 E. 80** wait for further instructions.
- \****Stairway B:*** Exit building through basement fire exit in stairway B. Travel through **40 E. 80** basement and exit the building and line students up in front of **40 E. 80** wait for further instructions.

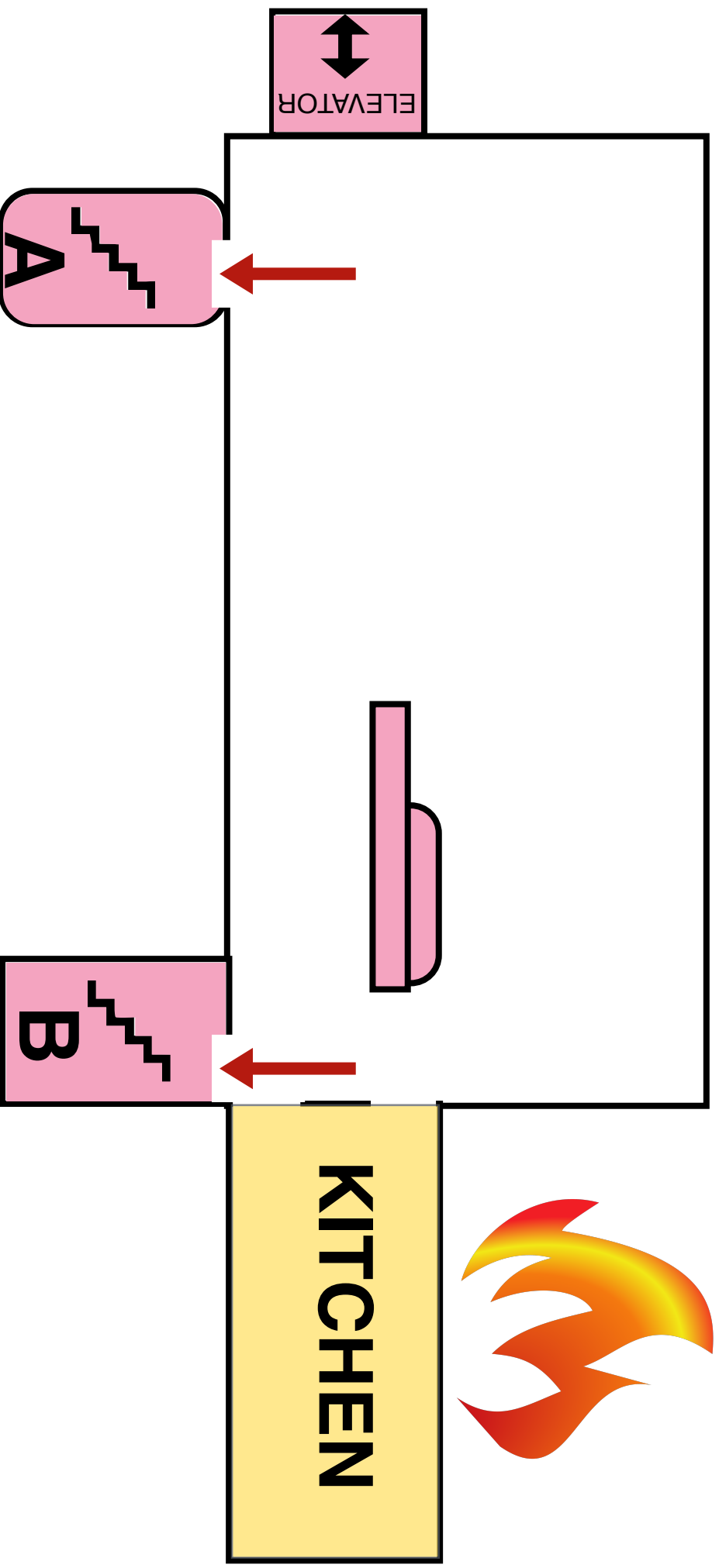


## ***In Case of Police Emergency***

- \*Exit 4th floor through **Stairway B**.
- \***GO UP Stairway B** to the roof.
- \****Shelter in place in the air conditioner room on the roof until the ALL CLEAR.***



# 4th Floor Fire Safety Plan



## *In Case of Fire*

- \* Determine location of the fire.
- \* Use the stairway ***furthest*** away from the fire.
- \* ***Stairway A:*** Exit building through lobby, line students up in front of 40 E. 80
- \* ***Stairway B:*** Exit building through basement fire exit into 40 E. 80 and line students up in front of 40 E. 80

**B**

**Stairwell  
Basement**

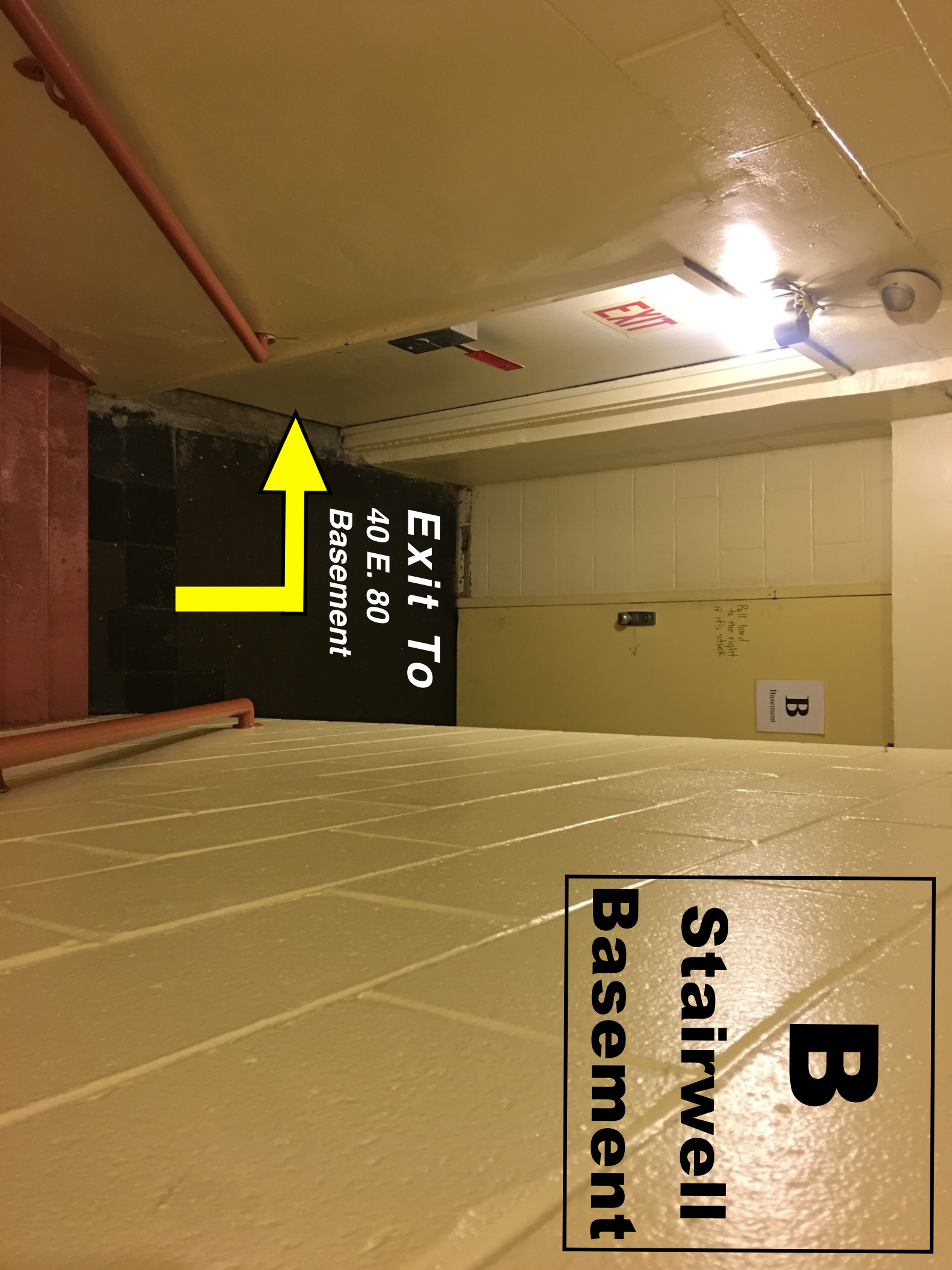
**Exit To  
40 E. 80  
Basement**



**B**  
Basement

Roll hand  
to the right  
if its stuck

**EXIT**



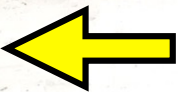
**Exit From  
40 E. 80  
Basement**



# MCOOC Student Evacuation Gathering Location

40 East 80th St

Wee Wonder  
Class



Early  
Childhood  
Class



Primary Age  
Class



TEENS

Middler Age  
Class



Madison Ave.



East 80th St.

